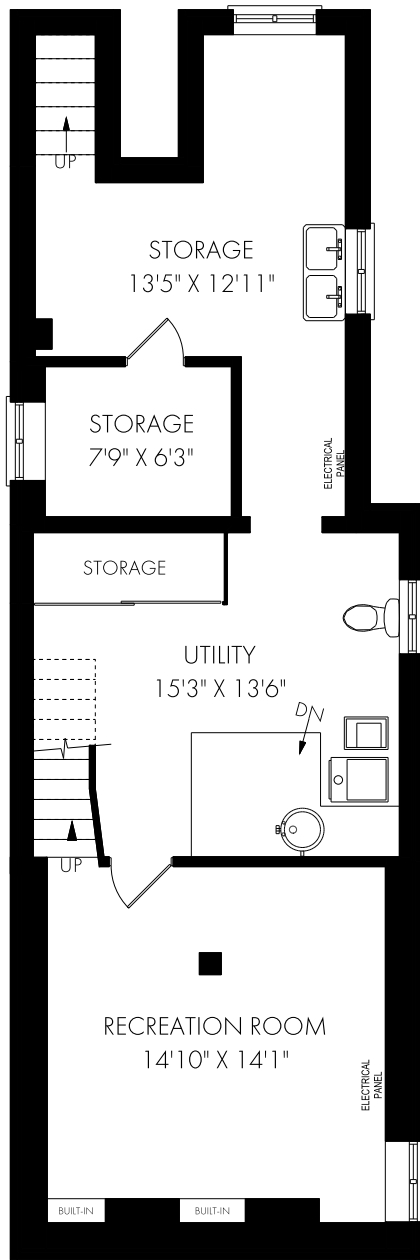


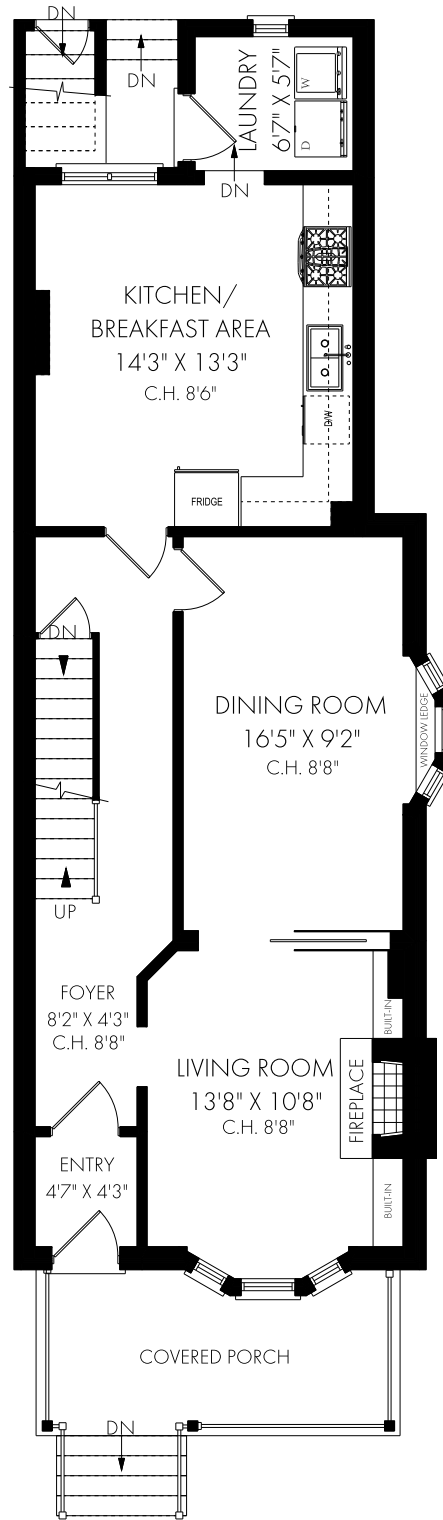
932 Logan Avenue, Toronto



FLOOR PLAN



LOWER LEVEL - 835 SQUARE FEET



MAIN FLOOR - 817 SQUARE FEET



Wednesday, August 31, 2022

Note: Although measurements and area believed to be accurate they should be considered approximate. This drawing was prepared by Plans4U for the sole benefit and use by the client. No third party may rely on this drawing without the receipt of reliance letter from Plans4U

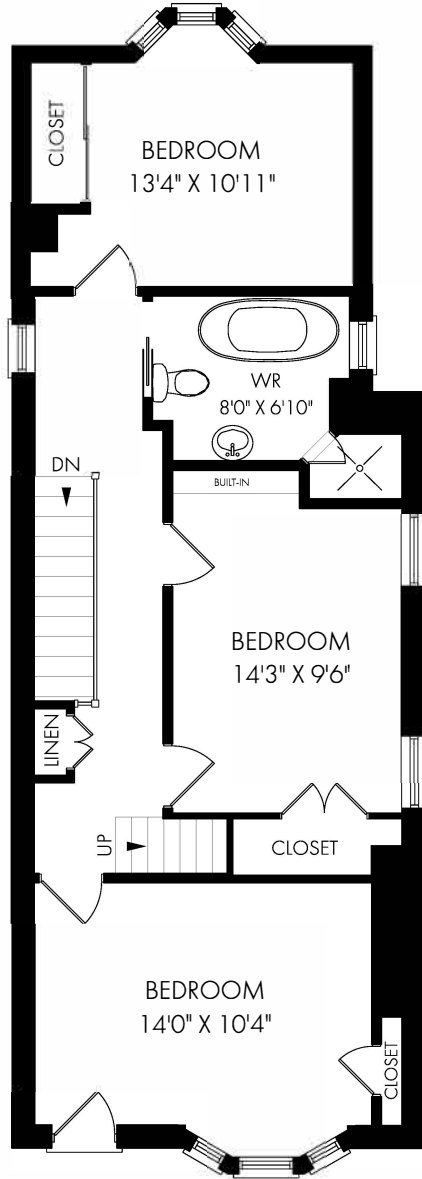
PLANS4U © 2019 PLANSFORYOU

PlansForYou.ca/ info@plansforyou.ca /416.999.5096

932 Logan Avenue, Toronto

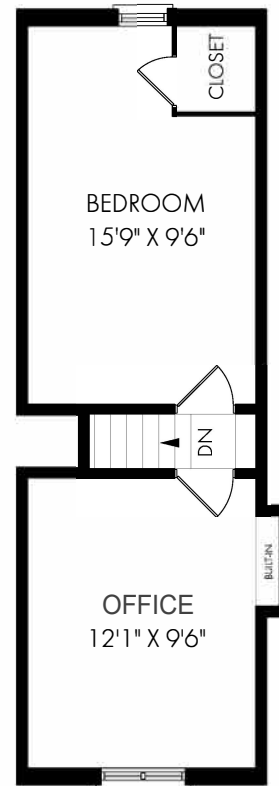


FLOOR PLAN



CEILING HEIGHT 8'2"

SECOND FLOOR - 769 SQUARE FEET



THIRD FLOOR - 336 SQUARE FEET

