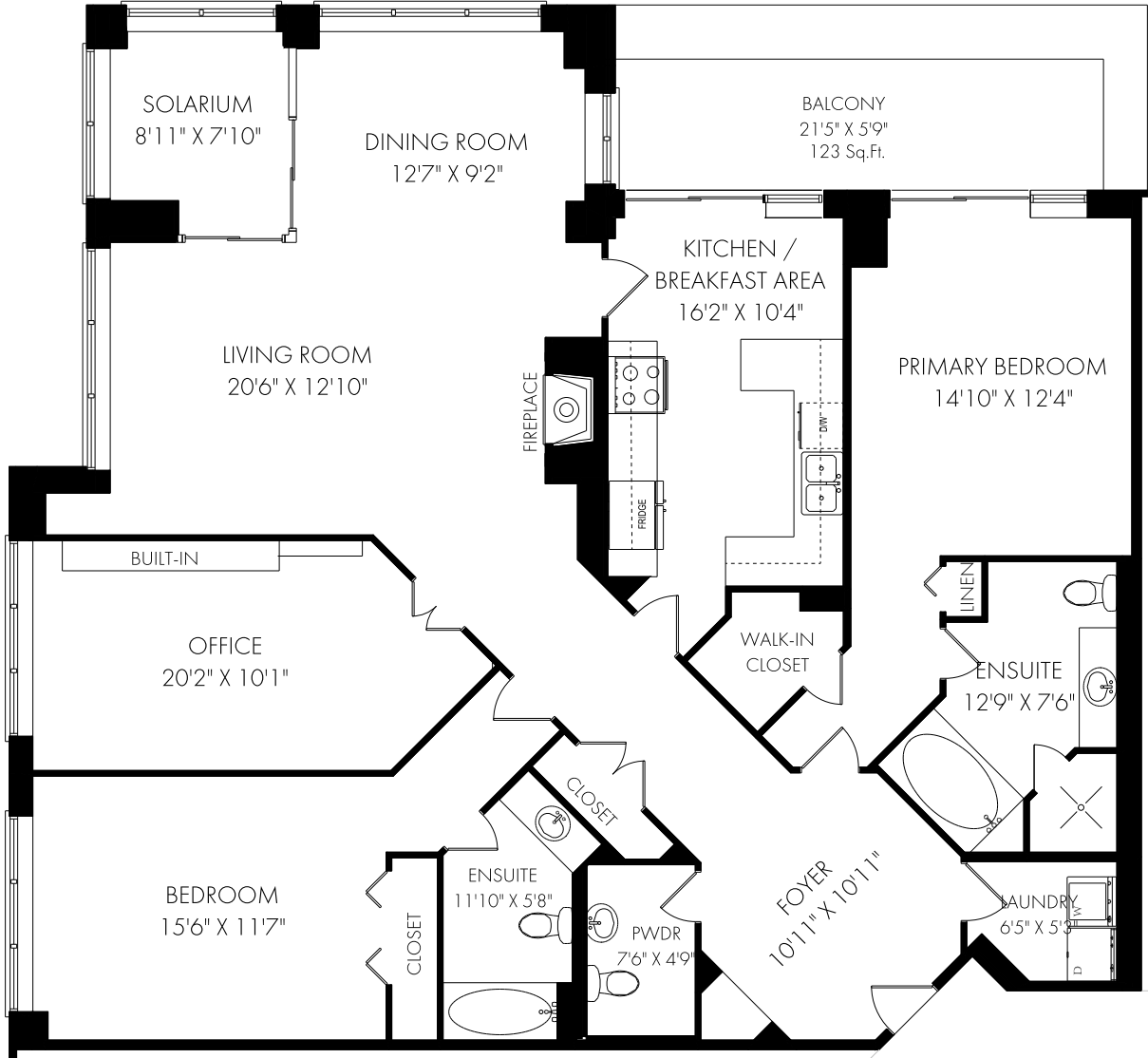


# 803-2900 Yonge Street, Toronto

## FLOOR PLAN



CEILING HEIGHT 8'0"  
**SUITE 803 - 1992 SQUARE FEET**



Tuesday, October 12, 2021

Note: Although measurements and area believed to be accurate they should be considered approximate. This drawing was prepared by Plans4U for the sole benefit and use by the client. No third party may rely on this drawing without the receipt of reliance letter from Plans4U

**PLANS4U** © 2021 PLANS4YOU

PlansForYou.ca/ info@plansforyou.ca /416.999.5096