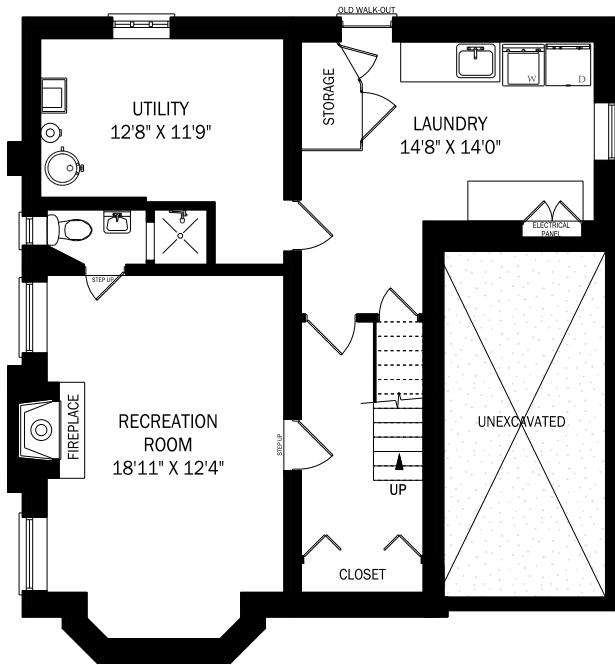
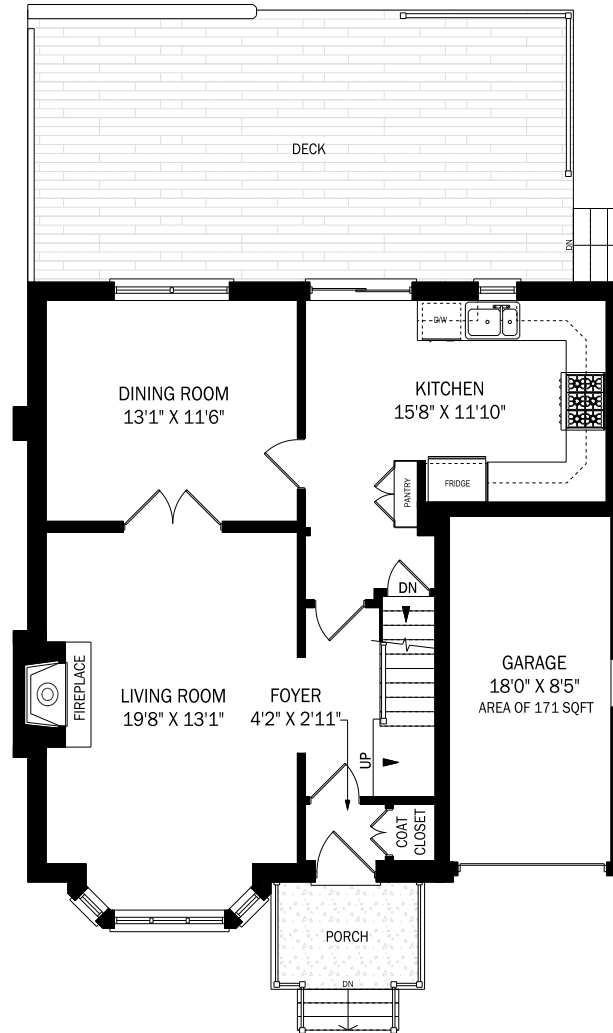


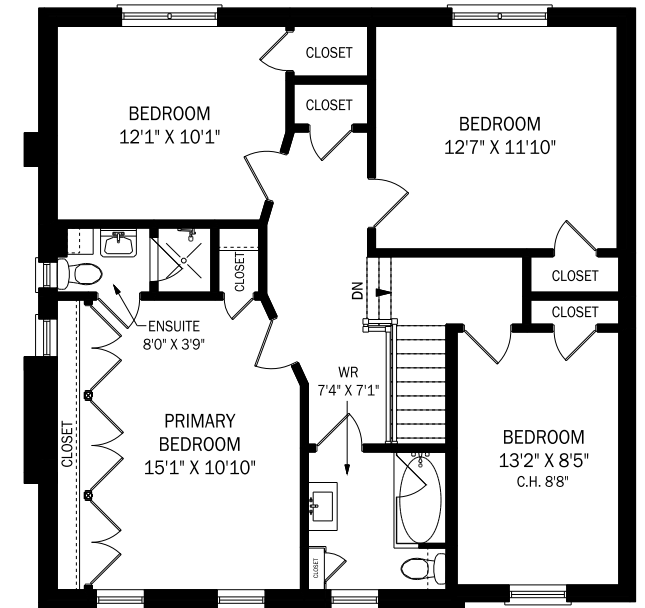
# 78 WHITEHALL ROAD, TORONTO



CEILING HEIGHT 6'11"  
LOWER LEVEL - 820 SQUARE FEET



CEILING HEIGHT 8'4"  
MAIN FLOOR - 820 SQUARE FEET



CEILING HEIGHT 8'1"  
SECOND FLOOR - 968 SQUARE FEET

