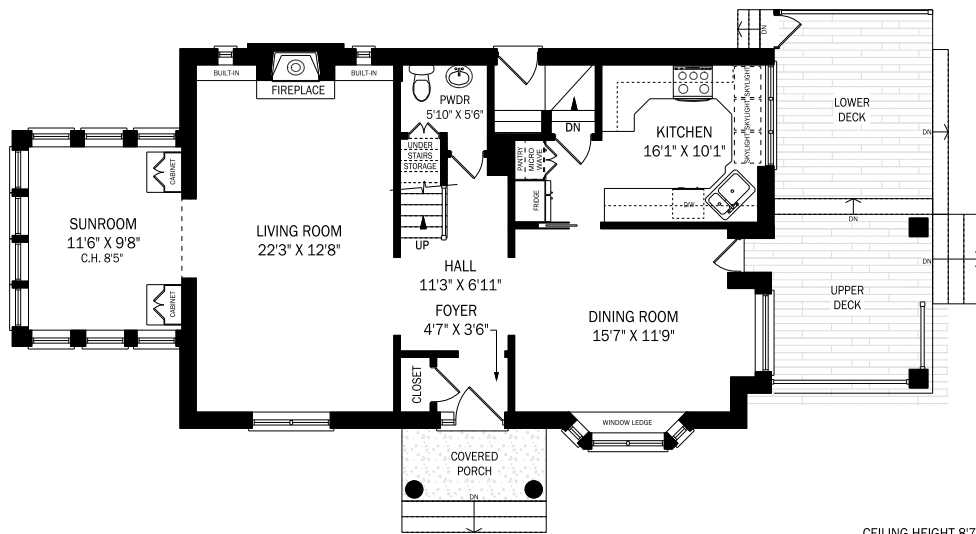
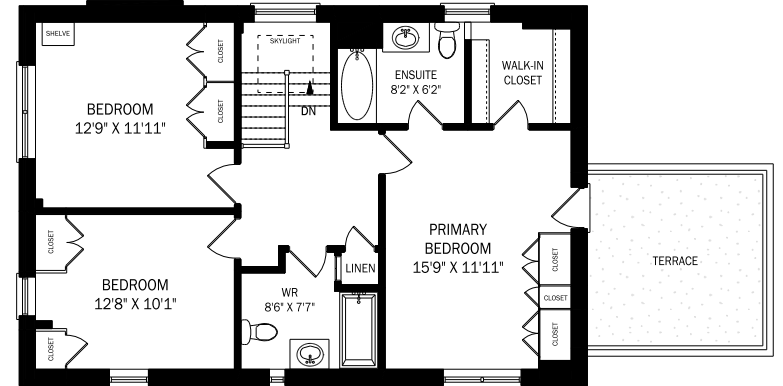


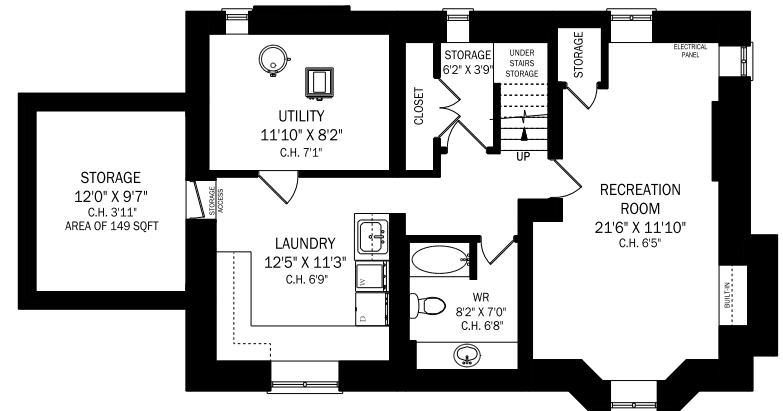
74 GLENGROVE AVENUE WEST, TORONTO



CEILING HEIGHT 8'7"
MAIN FLOOR - 1075 SQUARE FEET



CEILING HEIGHT 8'7"
SECOND FLOOR - 886 SQUARE FEET



CEILING HEIGHT 6'9"
LOWER LEVEL - 904 SQUARE FEET