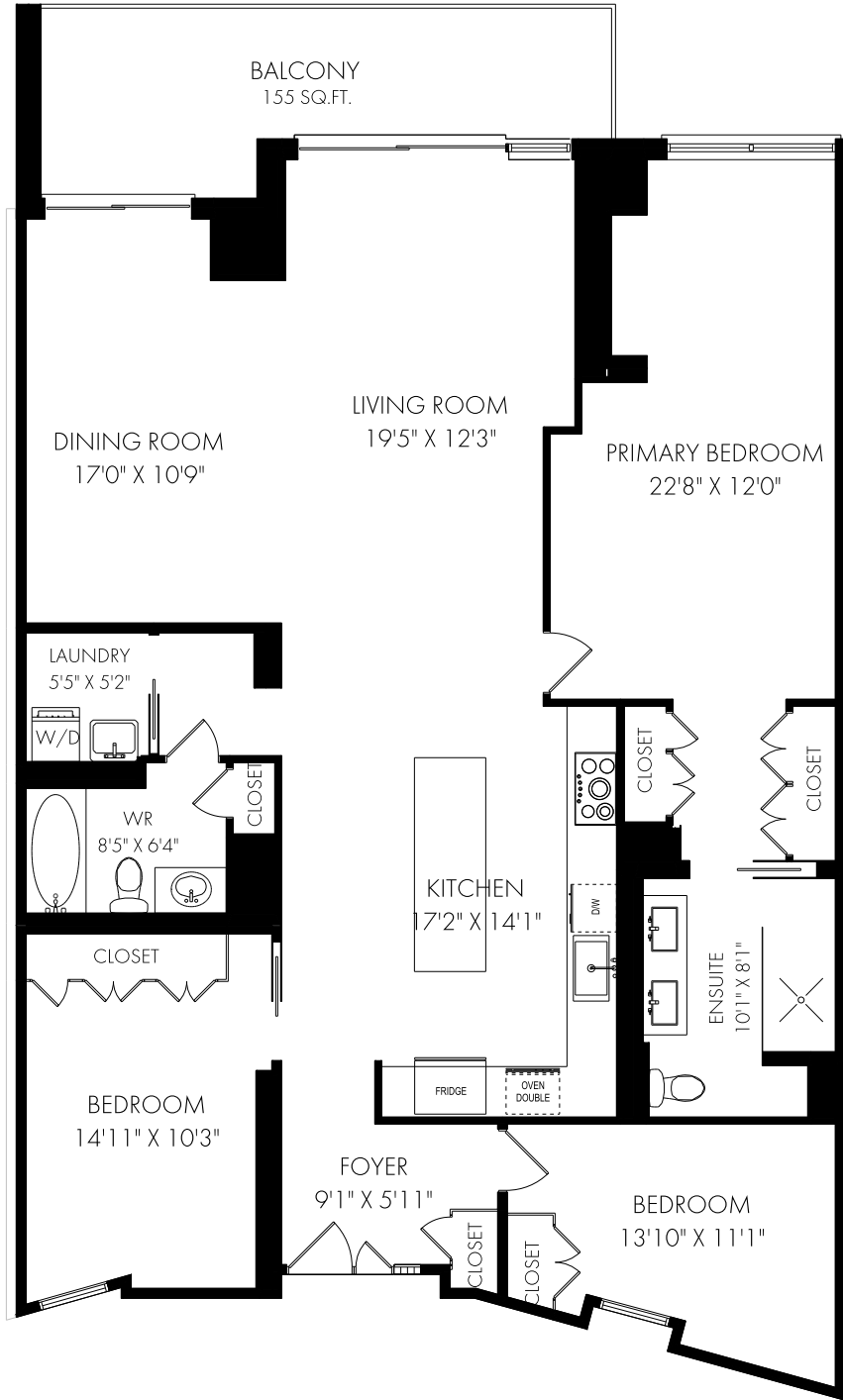


402-2727 Yonge Street, Toronto

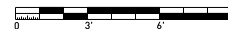


FLOOR PLAN



CEILING HEIGHT 7'8"

SUITE 402 -APPROX. 1700 SQUARE FEET



Tuesday, June 7, 2022

Note: Although measurements and area believed to be accurate they should be considered approximate. This drawing was prepared by Plans4U for the sole benefit and use by the client. No third party may rely on this drawing without the receipt of reliance letter from Plans4U

PLANS4U © 2022 PLANS4YOU

PlansForYou.ca/ info@plansforyou.ca /416.999.5096