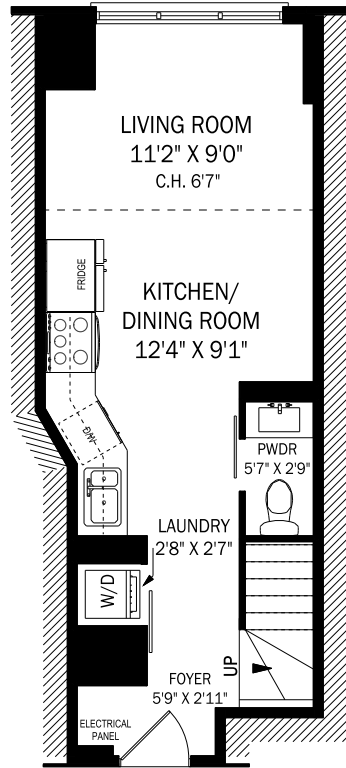
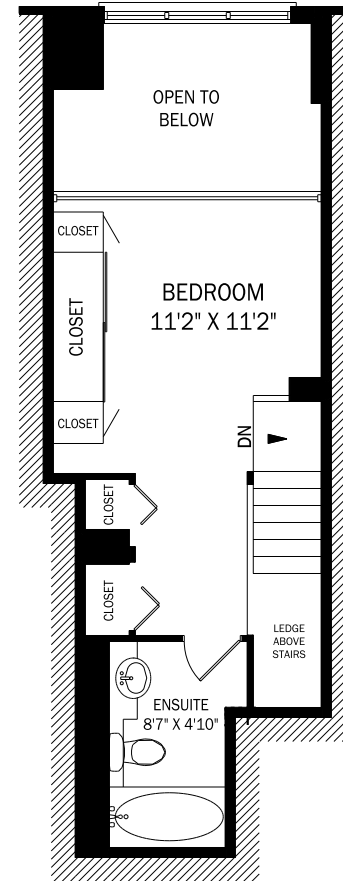


308-77 LOMBARD STREET, TORONTO



CEILING HEIGHT 8'0"
SUITE #308 - MAIN LEVEL
APPROX. 353 SQUARE FEET



CEILING HEIGHT 8'0"
SUITE #308 - UPPER LEVEL
APPROX. 312 SQUARE FEET



AREA EXCLUDES 70 SQ.FT.
 OPEN TO BELOW SPACE