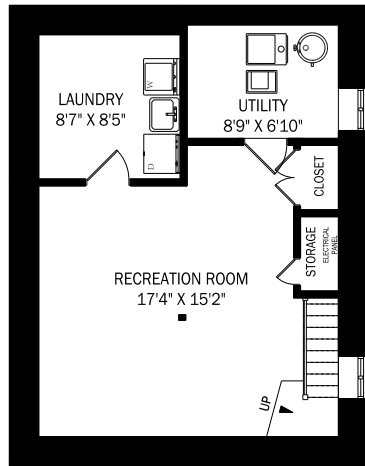
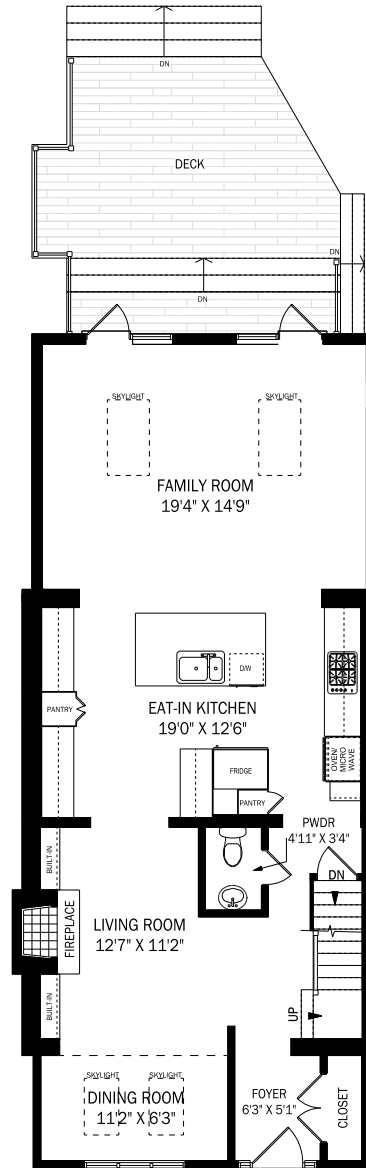


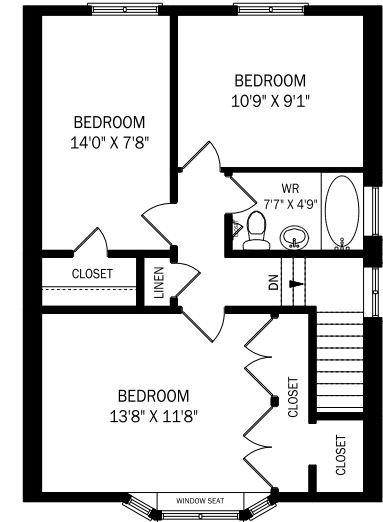
275 BRIAR HILL AVENUE, TORONTO



CEILING HEIGHT 6'9"
LOWER LEVEL - 585 SQUARE FEET



CEILING HEIGHT 8'4"
MAIN FLOOR - 1039 SQUARE FEET



CEILING HEIGHT 8'0"
SECOND FLOOR - 637 SQUARE FEET

