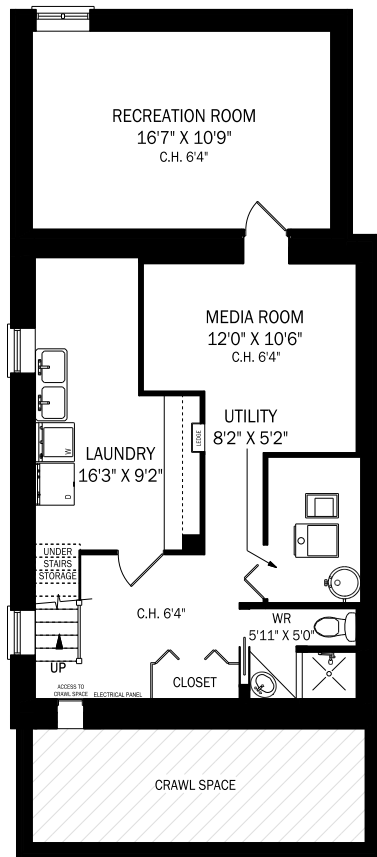
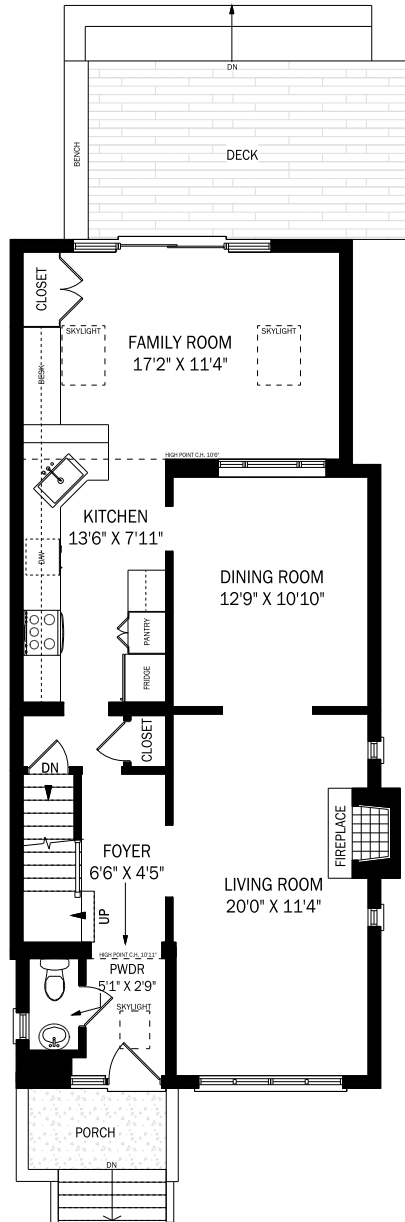


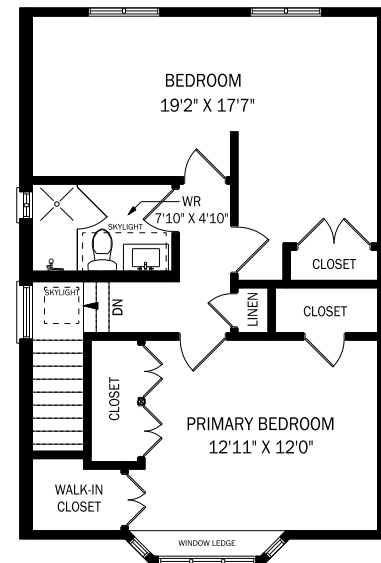
26 BIRDSALL AVENUE, TORONTO



CEILING HEIGHT 6'4"
LOWER LEVEL - 803 SQUARE FEET



CEILING HEIGHT 8'4"
MAIN FLOOR - 949 SQUARE FEET



CEILING HEIGHT 8'1"
SECOND FLOOR - 618 SQUARE FEET

