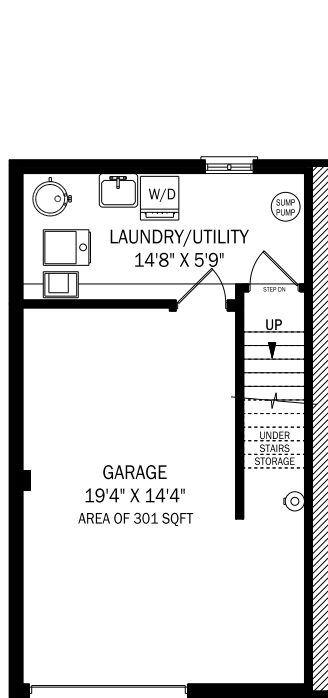
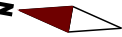
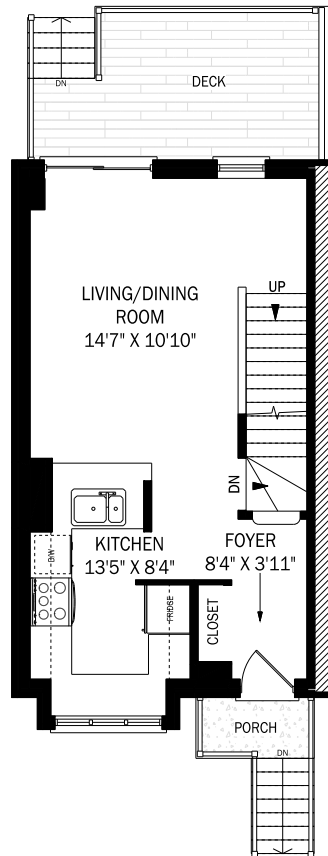


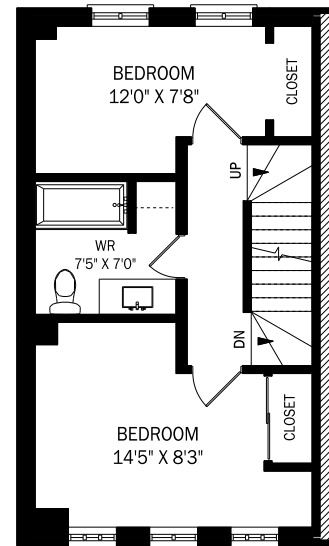
249C BERKELEY STREET, TORONTO



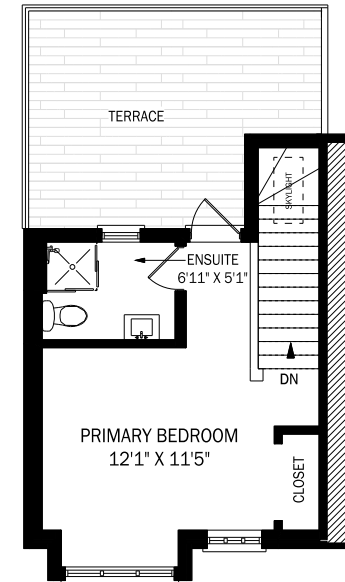
LOWER LEVEL - 141 SQUARE FEET



CEILING HEIGHT 8'0"
MAIN FLOOR - 455 SQUARE FEET



CEILING HEIGHT 8'0"
SECOND FLOOR - 442 SQUARE FEET



CEILING HEIGHT 8'0"
THIRD FLOOR - 297 SQUARE FEET

