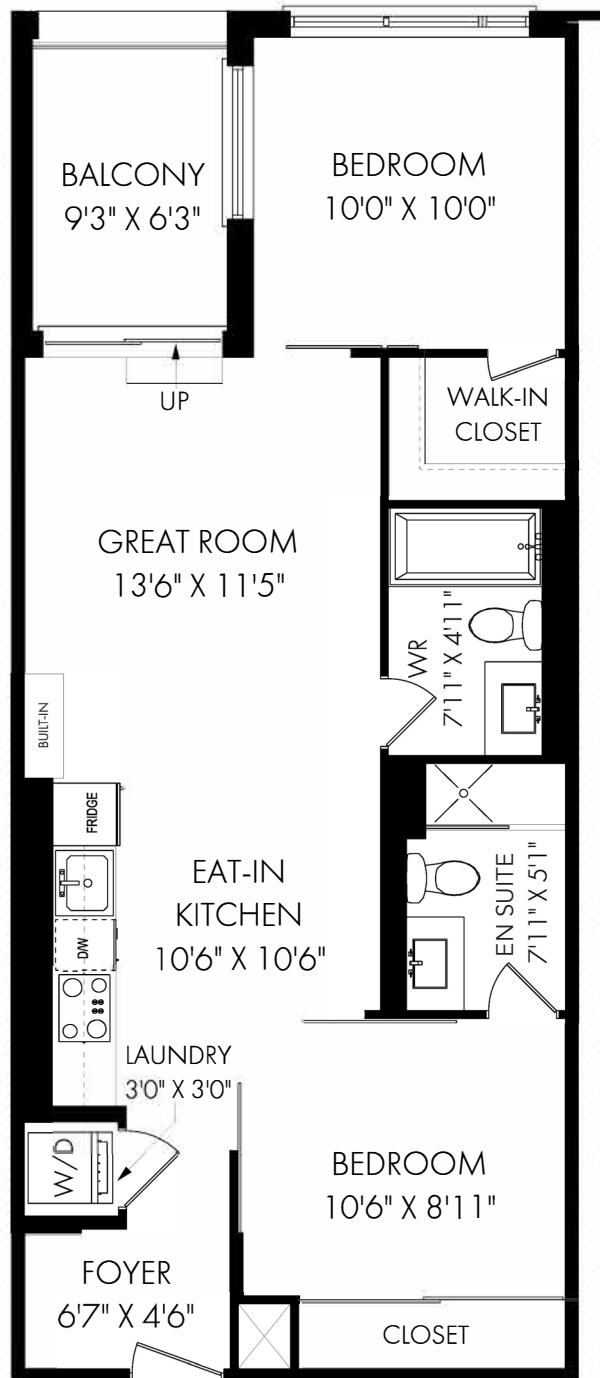


# 208-20 Gladstone Avenue, Toronto

FLOOR PLAN



CEILING HEIGHT 8'11"

**SUITE #208 - APPROX. 728 SQUARE FEET**



Friday, August 12, 2022

Note: Although measurements and area believed to be accurate they should be considered approximate. This drawing was prepared by Plans4U for the sole benefit and use by the client. No third party may rely on this drawing without the receipt of reliance letter from Plans4U