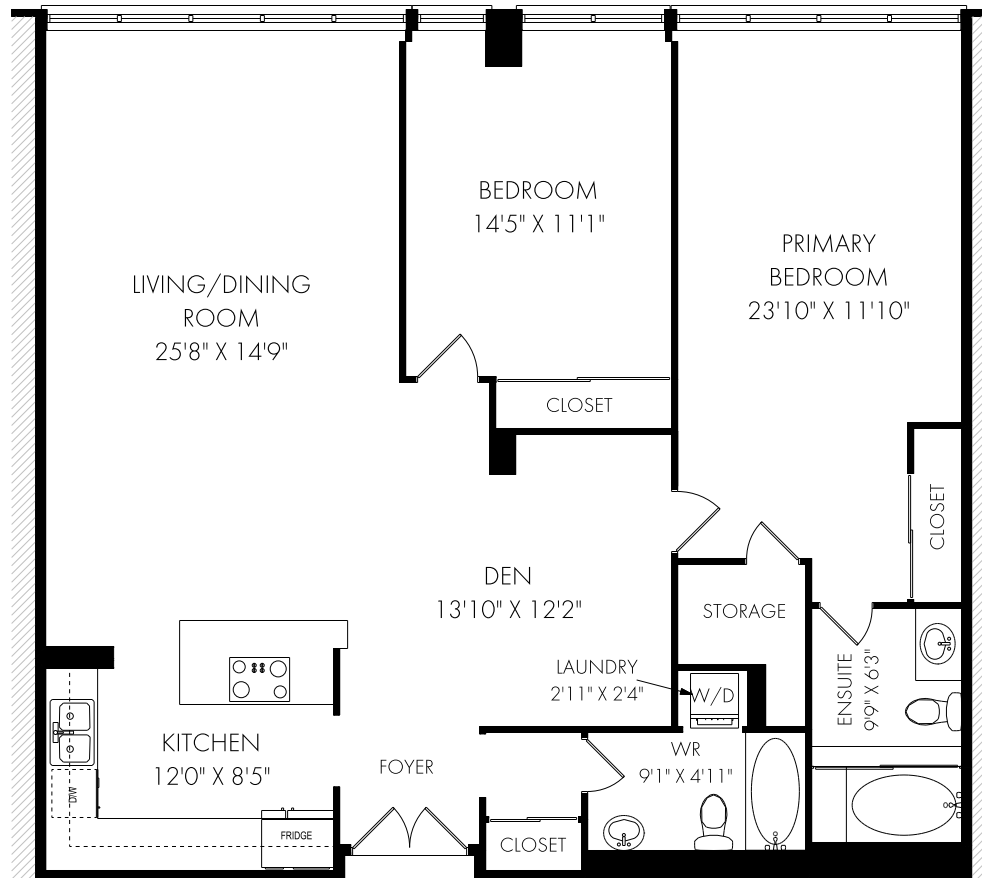
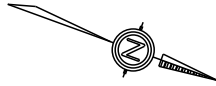


205-71 Charles Street East, Toronto

FLOOR PLAN



CEILING HEIGHT 8'0"

SUITE #205 - APPROX. 1411 SQUARE FEET



Tuesday, October 26, 2021

Note: Although measurements and area believed to be accurate they should be considered approximate. This drawing was prepared by Plans4U for the sole benefit and use by the client. No third party may rely on this drawing without the receipt of reliance letter from Plans4U