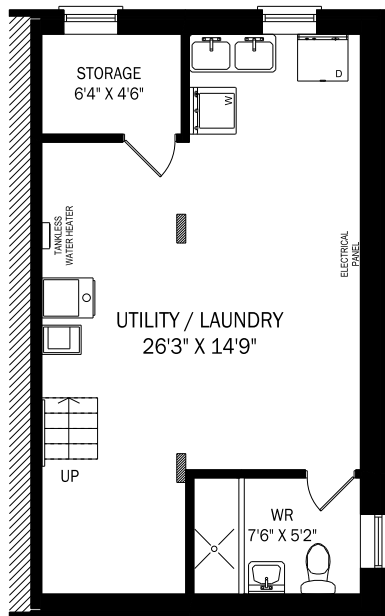
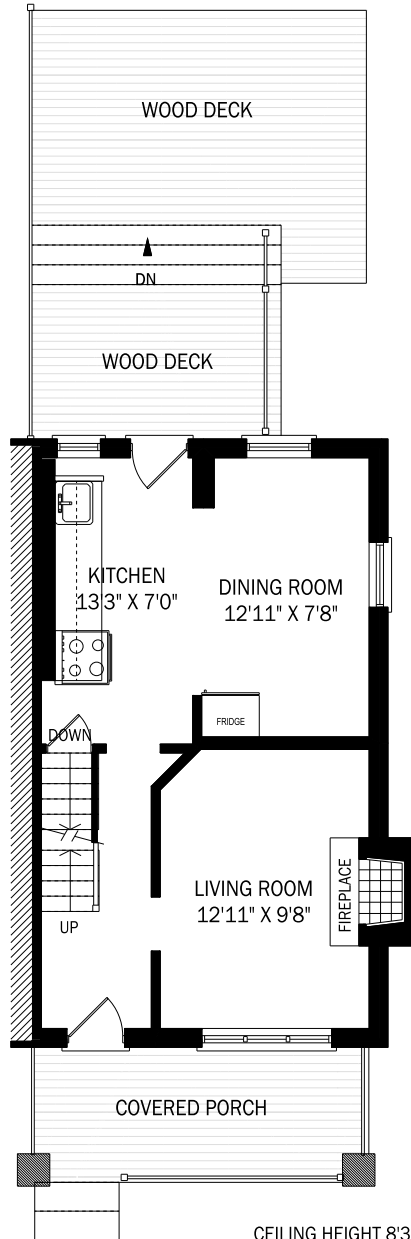
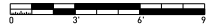


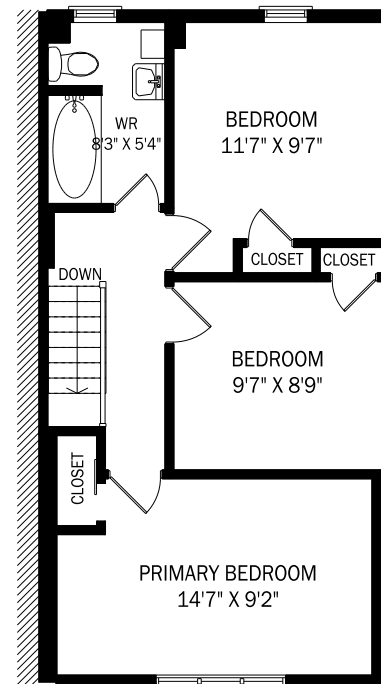
140 MORRISON AVENUE, TORONTO



CEILING HEIGHT 6'4"
BASEMENT - 464 SQUARE FEET



CEILING HEIGHT 8'3"
MAIN FLOOR - 464 SQUARE FEET



CEILING HEIGHT 7'10"
SECOND FLOOR - 514 SQUARE FEET

