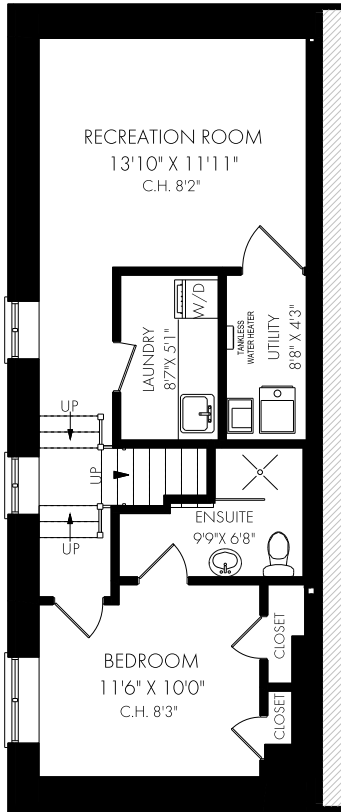


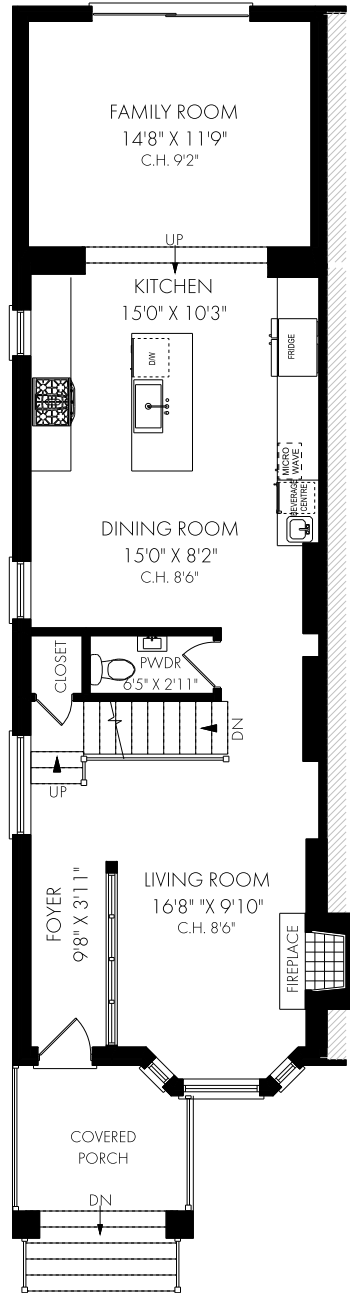
115 Sherwood Avenue, Toronto



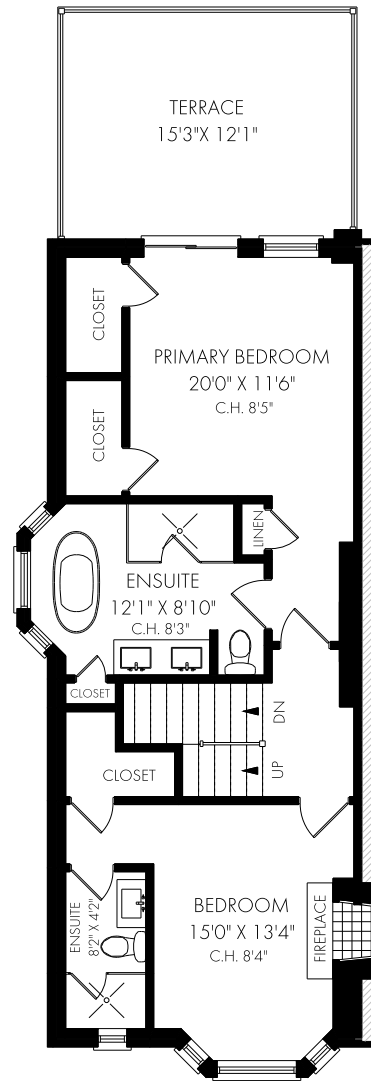
FLOOR PLAN



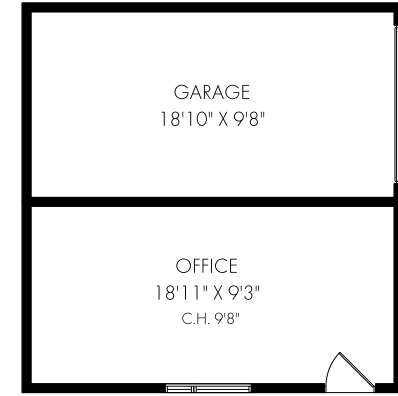
LOWER LEVEL - 689 SQUARE FEET



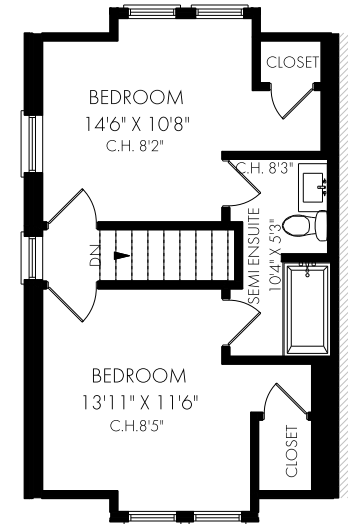
MAIN FLOOR - 914 SQUARE FEET



SECOND FLOOR - 710 SQUARE FEET



GARAGE/ OFFICE - 403 SQUARE FEET



THIRD FLOOR - 417 SQUARE FEET



Thursday, April 21, 2022

Note: Although measurements and area believed to be accurate they should be considered approximate. This drawing was prepared by Plans4U for the sole benefit and use by the client. No third party may rely on this drawing without the receipt of reliance letter from Plans4U