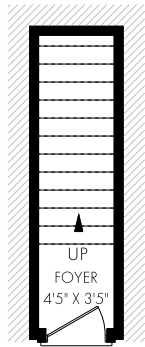
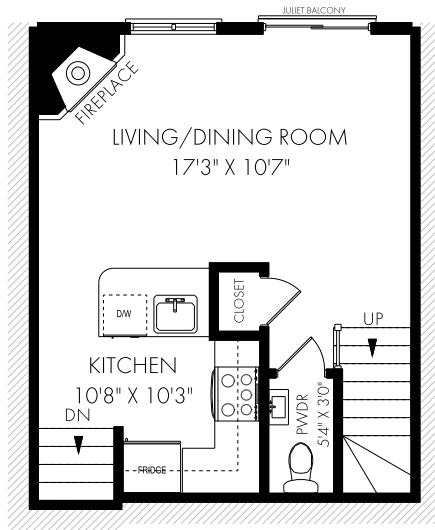


1120-20 Laidlaw Street, Toronto

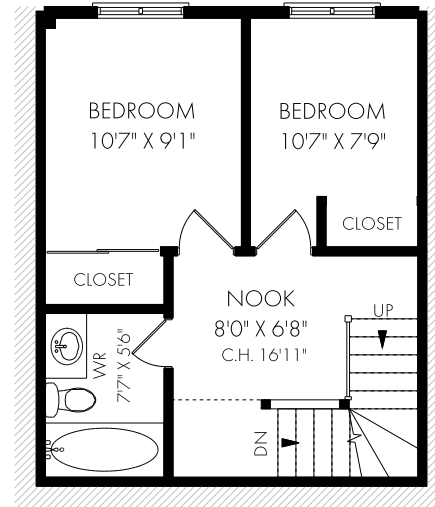
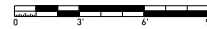
FLOOR PLAN



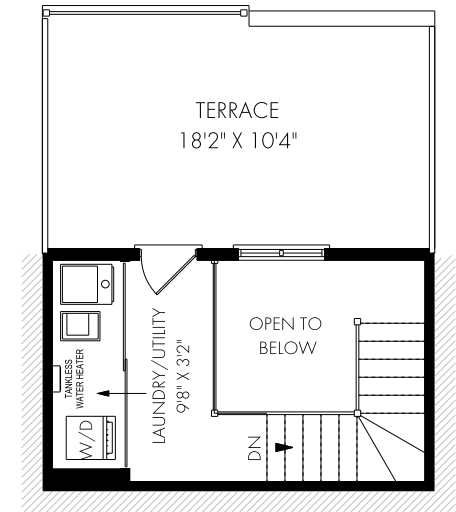
GROUND LEVEL - 63 SQUARE FEET



CEILING HEIGHT 8'0"
MAIN LEVEL - 403 SQUARE FEET



CEILING HEIGHT 8'0"
SECOND LEVEL - 402 SQUARE FEET



CEILING HEIGHT 8'0"
THIRD LEVEL - 150 SQUARE FEET



AREA EXCLUDES 53 SQ.FT.
OPEN TO BELOW SPACE

Tuesday, June 7, 2022

Note: Although measurements and area believed to be accurate they should be considered approximate. This drawing was prepared by Plans4U for the sole benefit and use by the client. No third party may rely on this drawing without the receipt of reliance letter from Plans4U