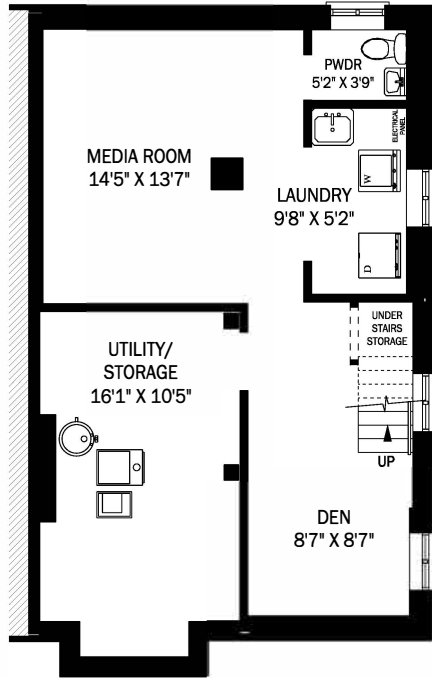
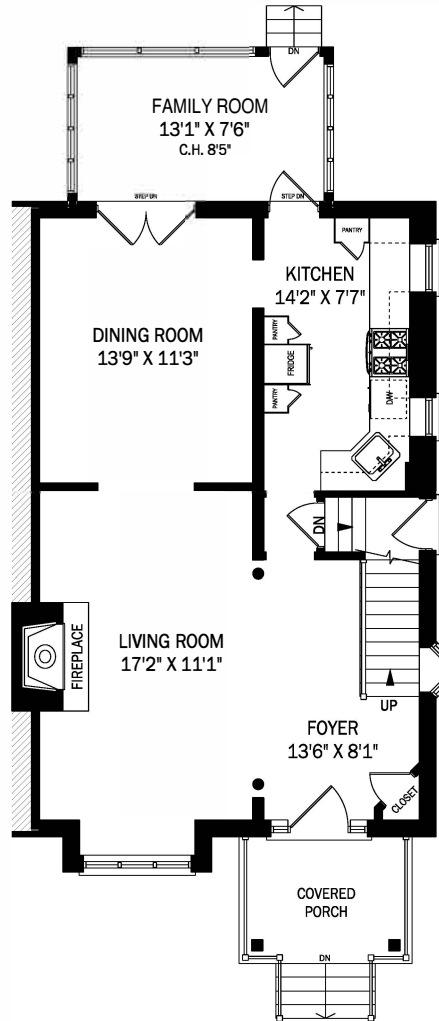


10 GLENCAIRN AVENUE, TORONTO



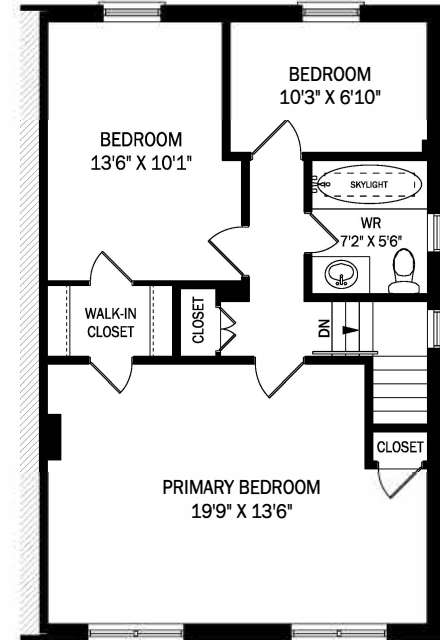
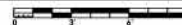
CEILING HEIGHT 6'7"

LOWER LEVEL - 710 SQUARE FEET



CEILING HEIGHT 8'5"

MAIN FLOOR - 823 SQUARE FEET



CEILING HEIGHT 8'0"

SECOND FLOOR - 696 SQUARE FEET

